

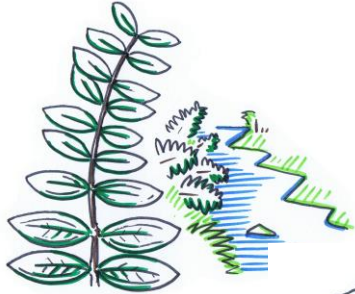


BRACE yourself, summer is coming...



...Poisonous honey is the last thing you want!

Tutin is a very real issue for the industry and the reputation of our product as being safe. This is the third in a series of updates that every beekeeper and honey producer needs to be aware of. We encourage you to check the resources available and to pass this information on to anyone who may find it useful.



PASSION VINE HOPPERS feed on tutu sap and secrete poisonous honeydew.

Tutin is a neurotoxin presents in **TUTU BUSHES**. Human ingestion can cause giddiness, exhaustion, vomiting, stupor and coma. Click [here](#) to learn how to recognise tutu.



In hot, dry weather, in the absence of more attractive food sources, **HONEY BEES** feed on honeydew.



This is a real risk for honey. Hobbyists and market traders that do not test their honey must take appropriate precautions.

To obtain more information and to see if your honey is at risk, watch this [video](#)

Take no risk, comply

All honey for sale must comply with the limits set out which is 0.7 milligram of tutin per kilogram of honey or comb. **Donating** and **bartering** are forms of trade that must also comply with the standard



Beekeepers, packers, and exporters are all **liable** for prosecution if someone is poisoned by honey.



A guide to compliance (click [here](#) to access) provided by MPI, explains what you must do and includes information on how testing is done.

For queries or any additional information, please contact us : bpsc.info@gmail.com

Ministry for Primary Industries
Manatū Ahu Matua

